



NEBULON

Feature-Driven Development

An Overview



NEBULON

Positioning

No Silver Bullet



NEBULON

The System

What is the system I am building?



NEBULON

Why FDD?

To enable and enforce the repeatable delivery of working software in a timely manner with highly accurate and meaningful information to all key roles inside and outside a project.



NEBULON

Feature Naming Template

<action> the <result> <by|for|of|to> a(n) <object>

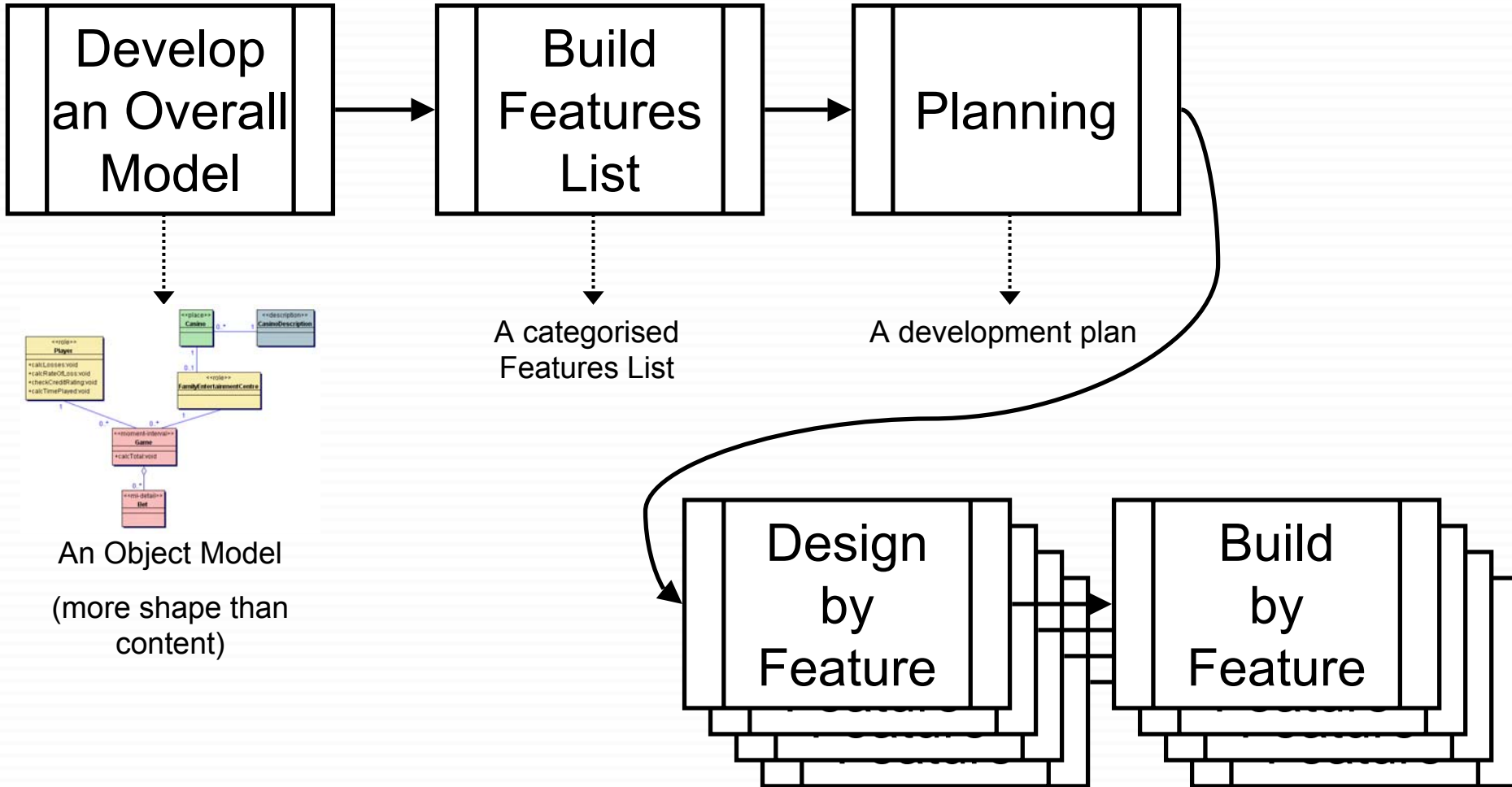
Calculate *the total amount of* a Sale

Calculate *the total quantity sold by a Retail Outlet*
for an Item Description

Determine *the most recent Cash Register*
Assignment for a Cashier

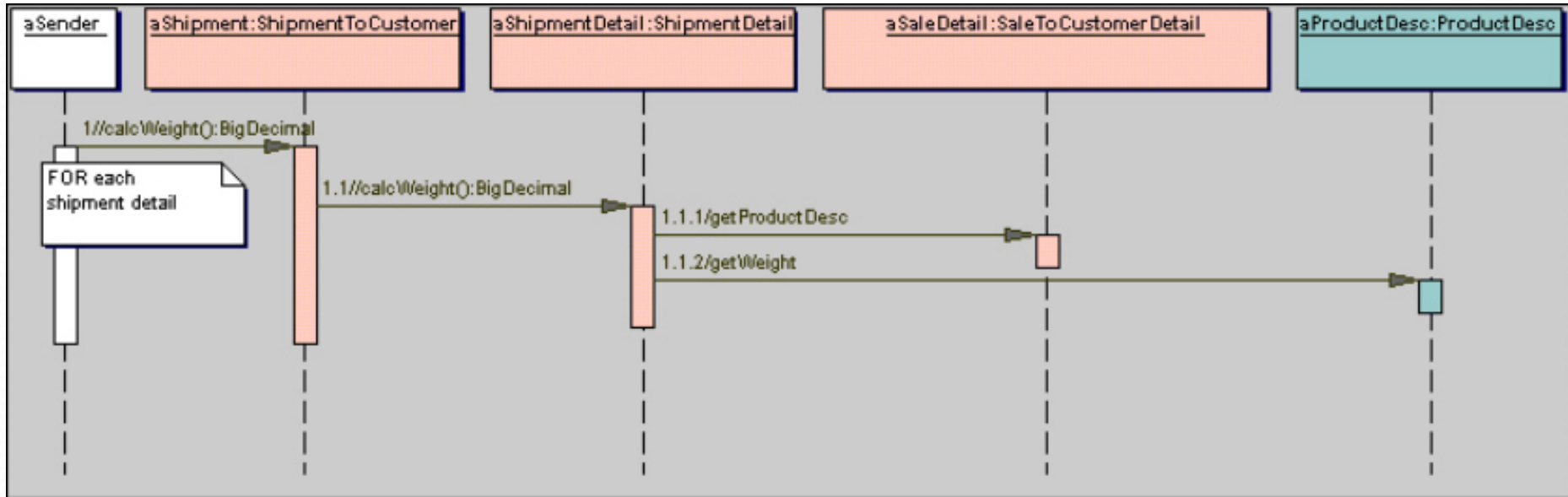


Initial Processes





Class Owners



calcWeight sequence from ProductSaleMgmt.ShipmentToCustomer

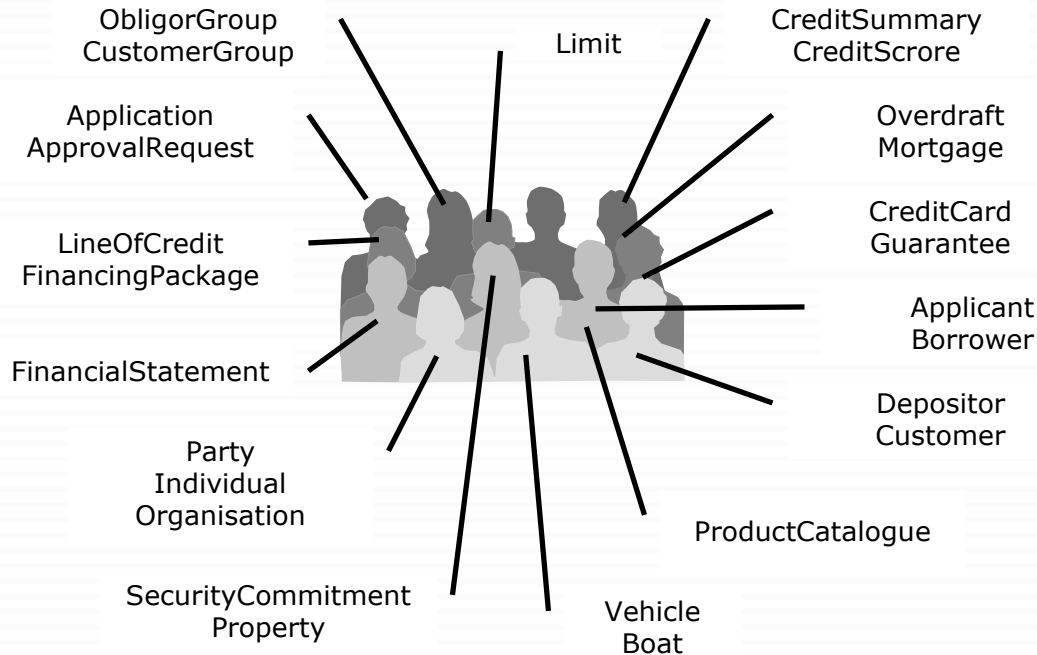
Java Modeling in Color with UML: Enterprise Components and Process

ISBN 0-13-011510-X

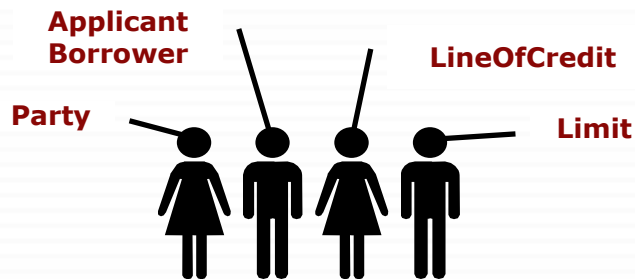


NEBULON

Feature Teams



Total the approved limits of an applicant

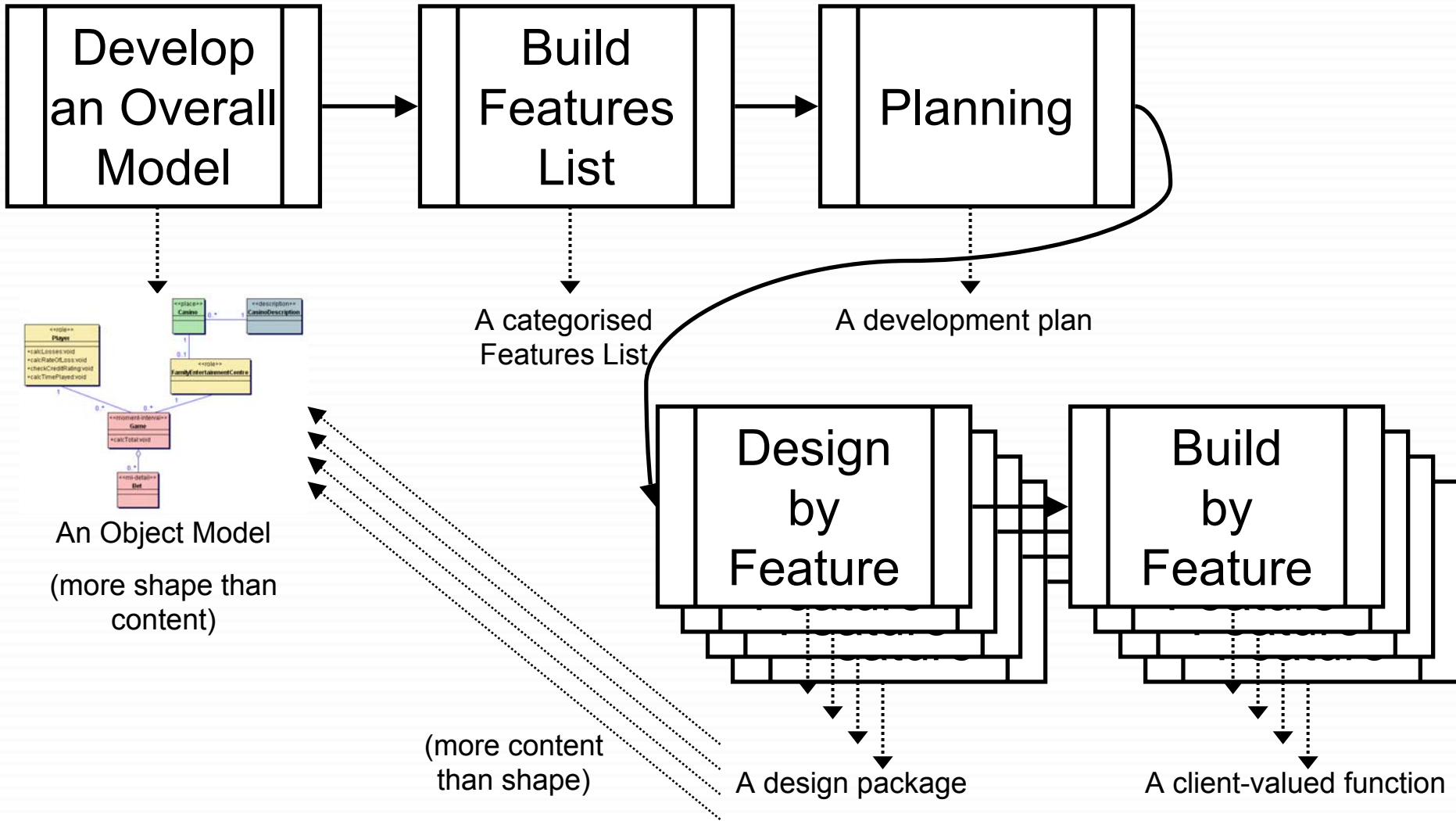


- A pool of class owners
- Features assigned to CPs
- CP determines likely classes (using knowledge from process #1 and #2)
- Classes owned by developers
- Feature team dynamically forms



NEBULON

Engine-Room Processes





“Milestones must be concrete, specific, measurable-events defined with a knife-edge sharpness”

“A programmer will rarely lie about milestone progress, *if* the milestone is so sharp he can't deceive himself”

“Getting the status is hard since subordinate managers have every reason not to share it”

Fred Brooks



NEBULON

Milestones

Domain Walkthrough	Design	Design Inspection	Code	Code Inspection	Promote to Build
--------------------	--------	-------------------	------	-----------------	------------------

1%

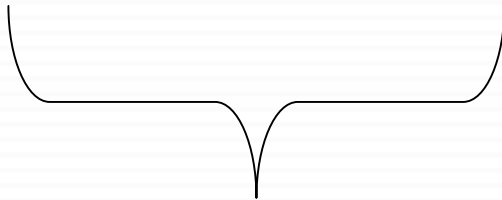
40%

3%

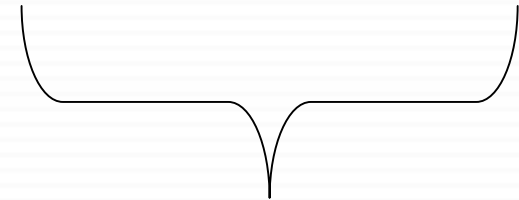
45%

10%

1%



#4: Design by Feature



#5: Build by Feature



NEBULON

Milestones

Domain Walkthrough		Design		Design Inspection		Code		Code Inspection		Promote to Build	
Plan	Actual	Plan	Actual	Plan	Actual	Plan	Actual	Plan	Actual	Plan	Actual



Weekly Summary

Implementation (MD)

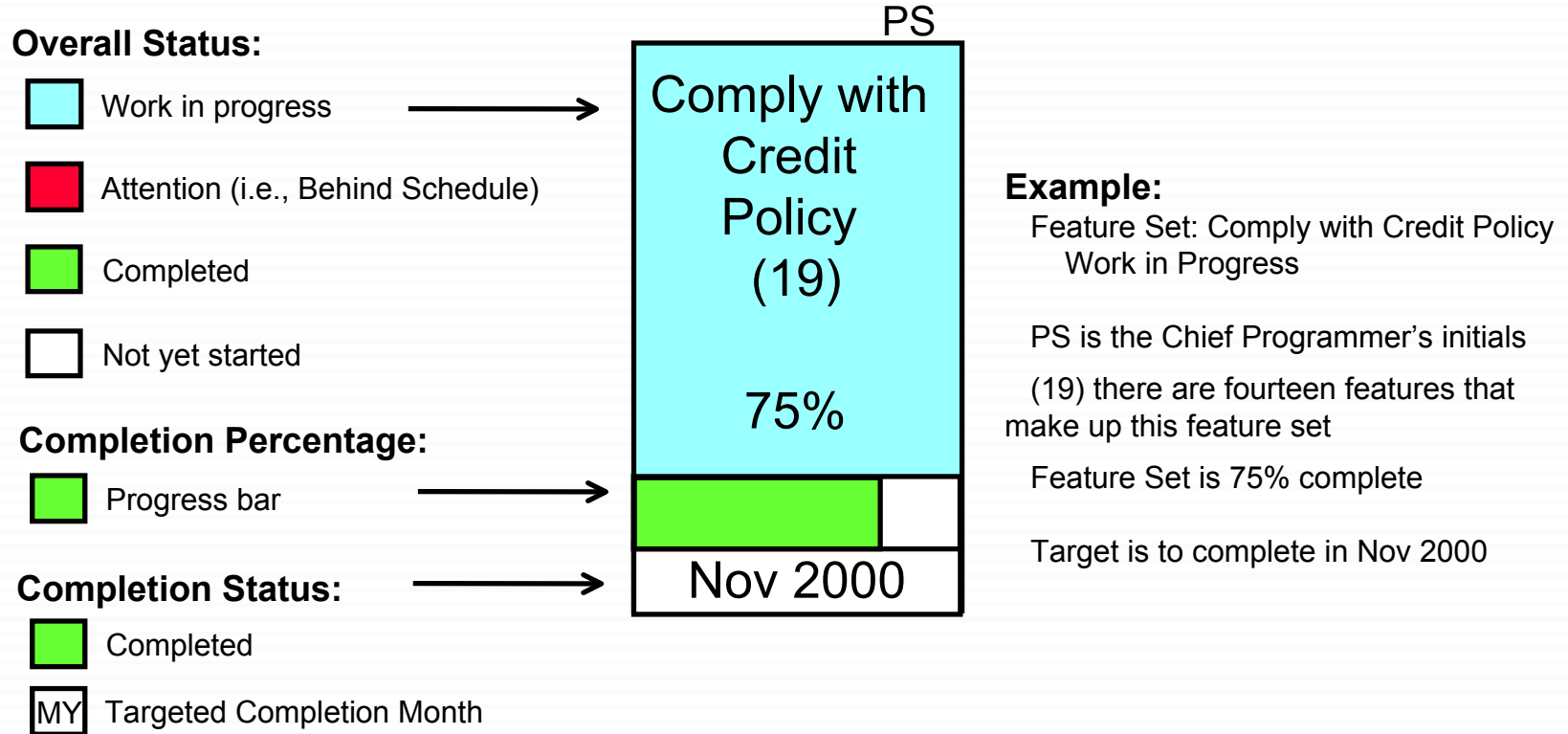
Feature Sets	Total Features	Not Started	In Progress	Behind Schedule	Completed	Inactive	% Completed	Completion Date
Authorisation	15	0	0	13	2	2	51	Mar 1999
Change Current Account for OD Line	12	12	0	0	0	0	0	Mar 1999
Establish Disbursement Details	35	0	0	4	31	1	91	Mar 1999
Establish Implementation Instruction	27	1	0	12	14	1	70	Mar 1999
Establish Line Implementation Details	21	0	0	4	17	0	89	Mar 1999
Establish a Loans, HP, LeasingLoans, BlockDiskcounting Line Impl.	7	0	0	0	7	0	100	Mar 1999
Establish a NIF RL Disbursement	8	6	0	0	2	1	25	Mar 1999
Establish a Trade or Gtee Line Implementation	9	0	0	0	9	0	100	Mar 1999
Establish an FX Line Implementation	5	0	0	0	5	0	100	Mar 1999
Establish an OD Line Implementation	13	0	0	0	13	0	100	Mar 1999
New Feature	3	0	0	0	3	0	100	Ongoing
Subject Area Total	155	19	0	33	103	5	74	

Progress Summary for Problem Domain

Total Features	Not Started	In Progress	Behind Schedule	Completed	Inactive	% Completed
1013	23	0	33	957	100	96



Graphical Summary Legend





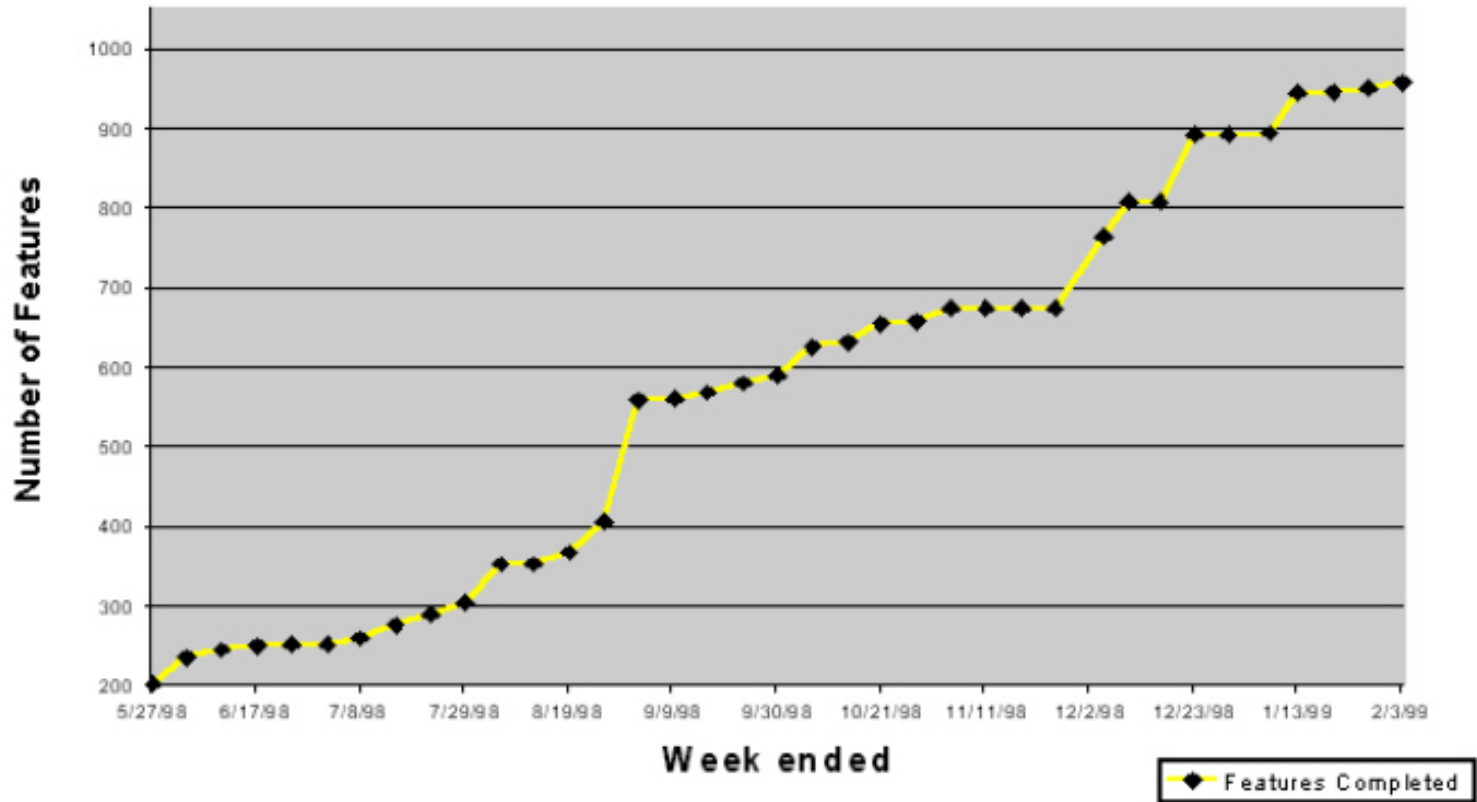
NEBULON

Trends

Week ended	Total Features	% Completed	Features Completed	Features Not Started	Features In Progress	Features Behind Schedule	Features Inactive
27-May-98	823	26%	202	588	1	32	25
3-Jun-98	823	29%	234	574	4	11	574
10-Jun-98	823	29%	245	573	0	5	30
17-Jun-98	824	30%	250	573	0	1	30
24-Jun-98	824	30%	251	573	0	0	30
1-Jul-98	824	30%	251	573	0	0	30
8-Jul-98	824	34%	260	475	81	8	40
15-Jul-98	824	37%	276	457	72	19	47
22-Jul-98	825	40%	290	450	85	0	47
29-Jul-98	931	38%	305	534	72	20	55
5-Aug-98	932	41%	353	463	83	33	73
12-Aug-98	1085	38%	353	578	117	37	73
19-Aug-98	1085	44%	368	488	129	100	73
26-Aug-98	1085	46%	406	478	23	178	73
2-Sep-98	1087	53%	558	447	48	34	79
9-Sep-98	1107	54%	560	420	51	76	81
16-Sep-98	1107	57%	568	411	50	78	81
23-Sep-98	1107	57%	579	411	50	67	81
30-Sep-98	1119	57%	589	364	94	72	86
7-Oct-98	1122	62%	626	258	176	62	86
14-Oct-98	1122	65%	631	257	167	67	86



PD Completed Features on a Weekly basis





Plan View

NEBULON

Comply with Diversity Constraints (13)

ID	Description	Walkthrough		Design		Design Inspection		Development		Code Inspection		Promote to Build	
		Plan	Actual	Plan	Actual	Plan	Actual	Plan	Actual	Plan	Actual	Plan	Actual
XP077	determine the diversity requirement for a Pathing Step Context	05/12/2000	05/12/2000	06/12/2000	11/12/2000	07/12/2000	12/12/2000	13/12/2000		14/12/2000		15/12/2000	
XP078	determine the diversity category of an IPPC for Diversity Constraints	05/12/2000	05/12/2000	06/12/2000	11/12/2000	07/12/2000	12/12/2000	13/12/2000		14/12/2000		15/12/2000	
XP079	determine other end of an IPPC	05/12/2000	05/12/2000	06/12/2000	11/12/2000	07/12/2000	12/12/2000	13/12/2000		14/12/2000		15/12/2000	
XP080	determine the diversity category of a pathing point for Diversity Constraints	05/12/2000	05/12/2000	06/12/2000	11/12/2000	07/12/2000	12/12/2000	13/12/2000		14/12/2000		15/12/2000	
XP081	remove the must-avoid IPPCs from the list of candidate IPPCs	05/12/2000	05/12/2000	06/12/2000	11/12/2000	07/12/2000	12/12/2000	13/12/2000		14/12/2000		15/12/2000	
XP082	sort by diversity category, weighting, site type hubbing priority, node type hubbing priority, and distance the list of candidate IPPCs	05/12/2000	05/12/2000	06/12/2000	11/12/2000	07/12/2000	12/12/2000	13/12/2000		14/12/2000		15/12/2000	
XP083	generate the notes for use of a like to avoid Diversity Constraint	05/12/2000	05/12/2000	06/12/2000	11/12/2000	07/12/2000	12/12/2000	13/12/2000		14/12/2000		15/12/2000	
XP084	list the diversity items of an IPPC for Diversity Constraints	05/12/2000	05/12/2000	06/12/2000	11/12/2000	07/12/2000	12/12/2000	13/12/2000		14/12/2000		15/12/2000	
XP085	list the diversity items of a Pathing Point for Diversity Constraints	05/12/2000	05/12/2000	06/12/2000	11/12/2000	07/12/2000	12/12/2000	13/12/2000		14/12/2000		15/12/2000	
XP086	determine if all must have been found for Diversity Constraints	05/12/2000	05/12/2000	06/12/2000	11/12/2000	07/12/2000	12/12/2000	13/12/2000		14/12/2000		15/12/2000	
XP087	add must have diversity items to a Pathing Step Context	05/12/2000	05/12/2000	06/12/2000	11/12/2000	07/12/2000	12/12/2000	13/12/2000		14/12/2000		15/12/2000	
XP088	specify the Diversity Constraints for a Pathing Step Context	05/12/2000	05/12/2000	06/12/2000	11/12/2000	07/12/2000	12/12/2000	13/12/2000		14/12/2000		15/12/2000	
XP089	determine the Diversity Constraints for a Pathing Step Context	05/12/2000	05/12/2000	06/12/2000	11/12/2000	07/12/2000	12/12/2000	13/12/2000		14/12/2000		15/12/2000	

Progress sum for these features in business activity "Comply with Diversity Constraints": 44%
 Expected completion date: **Mar 2001**



NEBULON

Plan View – On the Wall



NEBULON

Plan View – Zoom In

Explode Design Model (19)

ID	Description	Walkthrough		Design		Design Inspection		Development		Code Inspection		Promote to Build	
		Plan	Actual	Plan	Actual	Plan	Actual	Plan	Actual	Plan	Actual	Plan	Actual
DP012	add an Design Items to an Design Items List	03/02/000	03/02/000	03/02/000	03/02/000	03/02/000	03/02/000	03/02/000	03/02/000	03/02/000	03/02/000	03/02/000	03/02/000
DP013	add a List of Design Items to an Design Items List	03/02/000	03/02/000	03/02/000	03/02/000	03/02/000	03/02/000	03/02/000	03/02/000	03/02/000	03/02/000	03/02/000	03/02/000
DP014	new Design to an Design Items List	03/02/000	03/02/000	03/02/000	03/02/000	03/02/000	03/02/000	03/02/000	03/02/000	03/02/000	03/02/000	03/02/000	03/02/000
DP015	in place for Design Items for a Design Product	03/02/000	03/02/000	03/02/000	03/02/000	03/02/000	03/02/000	03/02/000	03/02/000	03/02/000	03/02/000	03/02/000	03/02/000
DP016	remove the last valid Design Models during an issue of for a Design Product	03/02/000	03/02/000	03/02/000	03/02/000	03/02/000	03/02/000	03/02/000	03/02/000	03/02/000	03/02/000	03/02/000	03/02/000
DP017	remove if a Design Model associated any complete Design Items	03/02/000	03/02/000	03/02/000	03/02/000	03/02/000	03/02/000	03/02/000	03/02/000	03/02/000	03/02/000	03/02/000	03/02/000
DP018	remove if a Design Item is complete	03/02/000	03/02/000	03/02/000	03/02/000	03/02/000	03/02/000	03/02/000	03/02/000	03/02/000	03/02/000	03/02/000	03/02/000
DP019	in place for Design Items for a single Design Model	03/02/000	03/02/000	03/02/000	03/02/000	03/02/000	03/02/000	03/02/000	03/02/000	03/02/000	03/02/000	03/02/000	03/02/000
DP044	in place for Design Items for a single reusable Design Model												
DP045	in place for Design Items for a complete Design Model with one complete Design Items												
DP046	for Design Models for a complete Design Items												
DP047	in place for Design Items for a complete Design Model with one complete Design Items												
DP048	selectable combination of a Pair of Design Model Lists												
DP049	generate an Design Items List for a combination selection												
DP050	read the Design Items List for a Design Model												
DP051	read the Design Items List for a Design Model												
DP052	in place for Design Items for a complete Design Model with multiple complete Design Items												
DP053	new selectable combination of multiple Design Model Lists												
DP054	selectable combination to use specified order of multiple Design Model Lists												

Progress rate for Data Features to be delivered by "in place Design Model" 43%
 Design completion date Feb 2003

New Features (7)

ID	Description	Walkthrough		Design		Design Inspection		Development		Code Inspection		Promote to Build	
		Plan	Actual	Plan	Actual	Plan	Actual	Plan	Actual	Plan	Actual	Plan	Actual
DP011	add a new Design Model	03/02/000	03/02/000	03/02/000	03/02/000	03/02/000	03/02/000	03/02/000	03/02/000	03/02/000	03/02/000	03/02/000	03/02/000
DP012	add a new Design Model	03/02/000	03/02/000	03/02/000	03/02/000	03/02/000	03/02/000	03/02/000	03/02/000	03/02/000	03/02/000	03/02/000	03/02/000
DP013	add a new Design Model	03/02/000	03/02/000	03/02/000	03/02/000	03/02/000	03/02/000	03/02/000	03/02/000	03/02/000	03/02/000	03/02/000	03/02/000
DP014	add a new Design Model	03/02/000	03/02/000	03/02/000	03/02/000	03/02/000	03/02/000	03/02/000	03/02/000	03/02/000	03/02/000	03/02/000	03/02/000
DP015	add a new Design Model	03/02/000	03/02/000	03/02/000	03/02/000	03/02/000	03/02/000	03/02/000	03/02/000	03/02/000	03/02/000	03/02/000	03/02/000
DP016	add a new Design Model	03/02/000	03/02/000	03/02/000	03/02/000	03/02/000	03/02/000	03/02/000	03/02/000	03/02/000	03/02/000	03/02/000	03/02/000
DP017	add a new Design Model	03/02/000	03/02/000	03/02/000	03/02/000	03/02/000	03/02/000	03/02/000	03/02/000	03/02/000	03/02/000	03/02/000	03/02/000

Progress rate for Data Features to be delivered by "New Features" 44%
 Design completion date Apr 2003



Plan View – Example for Red

Features - Plan View

Implementation (MD)

Authorisation (9)

Id	Description	Chief Prog.	Class Own.	Walkthrough		Design		Design Inspection		Code		Code Inspection		Promote to Build	
				Plan	Actual	Plan	Actual	Plan	Actual	Plan	Actual	Plan	Actual	Plan	Actual
MD125	validate the transactional limits of a CAO against an implementation instruction	CP	ABC	23/12/98	23/12/98	31/01/99	31/01/99	01/02/99	01/02/99	10/02/99		18/02/99		20/02/99	
MD126	set the status of an implementation instruction	CP	ABC	23/12/98	23/12/98	31/01/99	31/01/99	01/02/99	01/02/99	10/02/99		18/02/99		20/02/99	
MD127	specify the authorising officer of an implementation instruction	CP	ABC	23/12/98	23/12/98	31/01/99	31/01/99	01/02/99	01/02/99	10/02/99		18/02/99		20/02/99	
MD128	reject an implementation instruction authorisation for a set of lines	CP	ABC	STATUS: inactive REMARKS: [added by CK: 3/2/99] No longer applicable											
MD129	confirm an implementation instruction authorisation for a set of lines	CP	ABC	23/12/98	23/12/98	31/01/99	31/01/99	01/02/99	01/02/99	10/02/99		18/02/99		20/02/99	
MD130	determine if all documents are completed for a borrower	CP	ABC	23/12/98	23/12/98	31/01/99	31/01/99	01/02/99	01/02/99	05/02/99		08/02/99		10/02/99	
MD131	validate the transactional limits of a CAO against a disbursement instruction	CP	ABC	23/12/98	23/12/98	31/01/99	31/01/99	01/02/99	01/02/99	05/02/99		08/02/99		10/02/99	
MD132	submit for authorisation an implementation instruction	CP	ABC	23/12/98	23/12/98	31/01/99	31/01/99	01/02/99	01/02/99	05/02/99	05/02/99	06/02/99	06/02/99	08/02/99	08/02/99
MD133	validate the drawdown date of an implementation instruction	CP	ABC	23/12/98	23/12/98	31/01/99	31/01/99	01/02/99	01/02/99	05/02/99	05/02/99	06/02/99	06/02/99	08/02/99	08/02/99

Progress sum for these features in (business) activity "Authorisation": 55%

Expected completion date: Mar 1999

